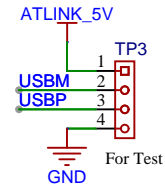
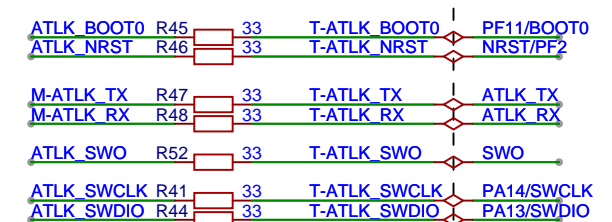
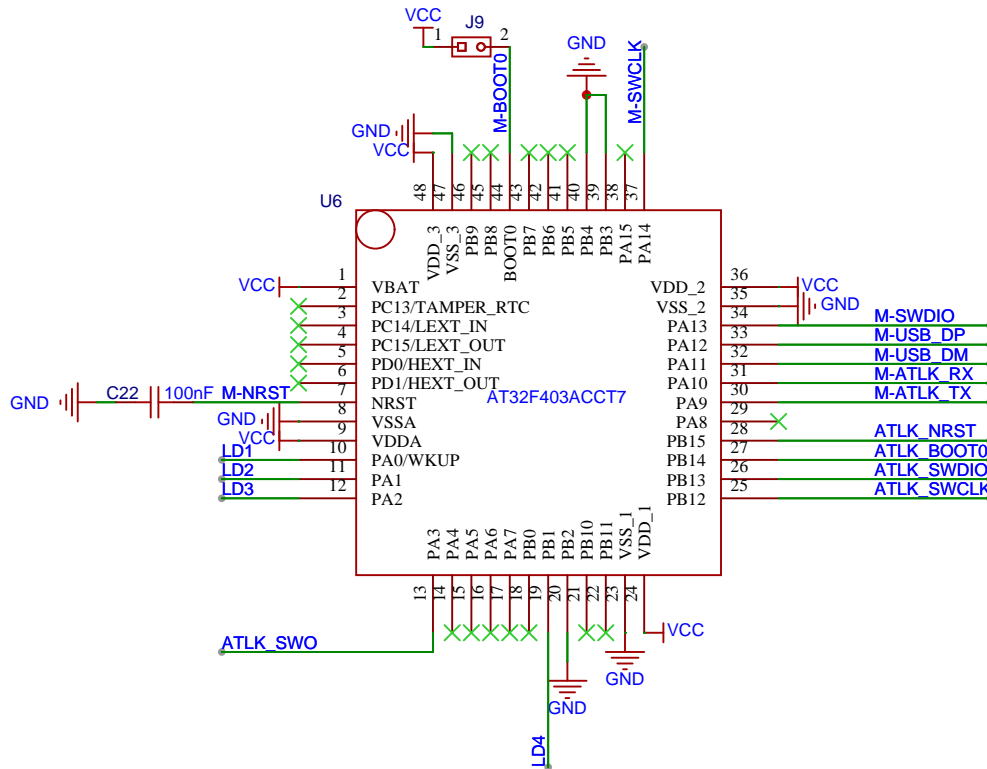
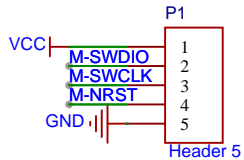
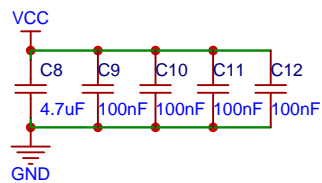
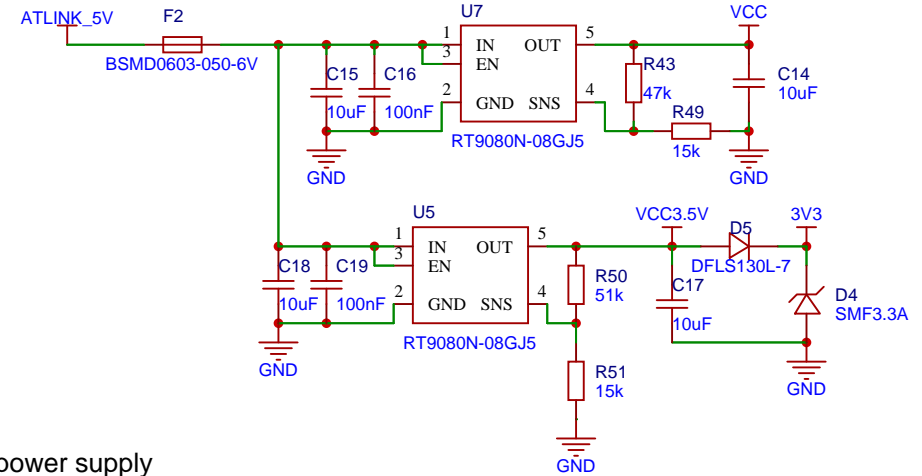


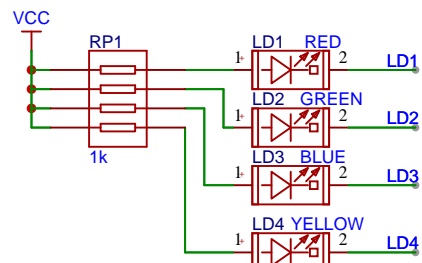
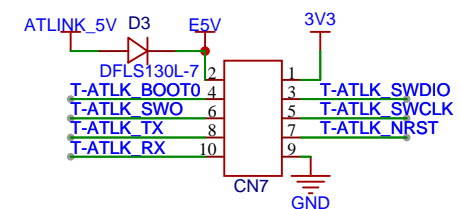
AT-Link USB



AT-Link power supply




AT-Link EZ CN7 to AT-START CN2 connection



LD1-4:For AT-Link-EZ status

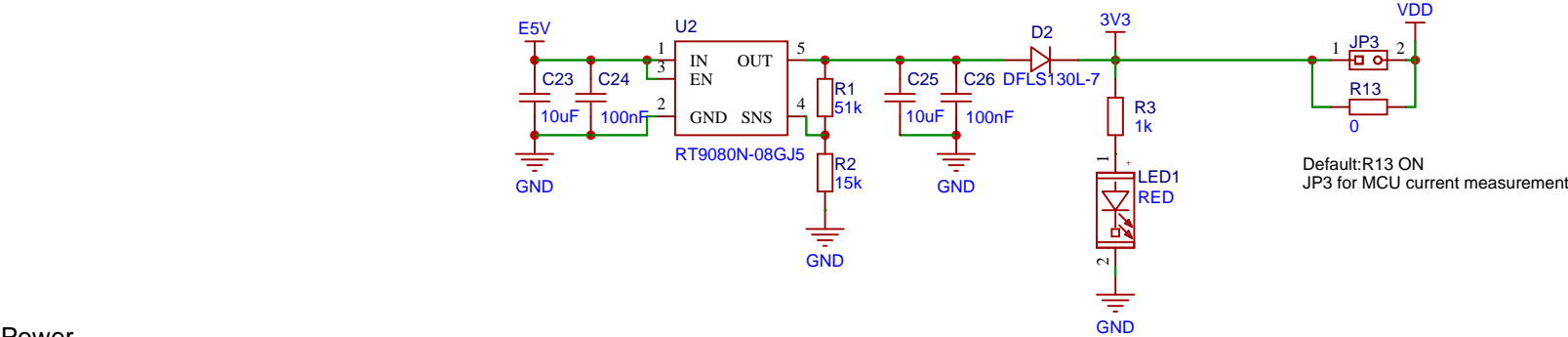
AT-Link MCU

Project:		AT-START-M416		Ver:	1.1	
Title:		AT-Link-EZ-V1.4		Page:	1	
	Company:		Artery Technology		Size:	A4
	Date:	2024-12-31	Drawn:			

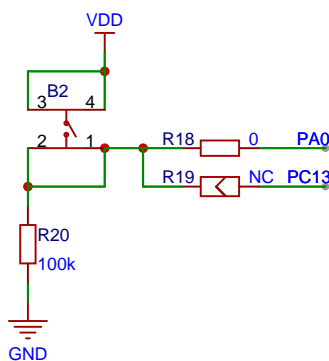


1

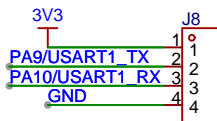




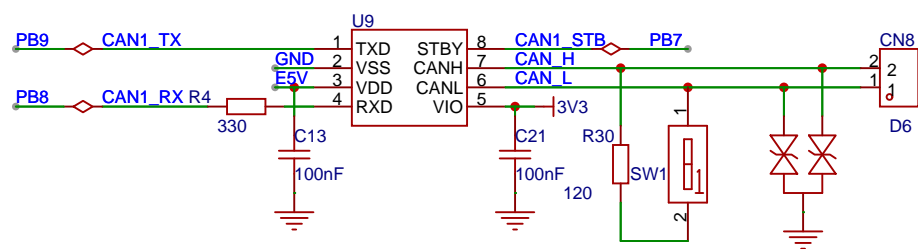
Power



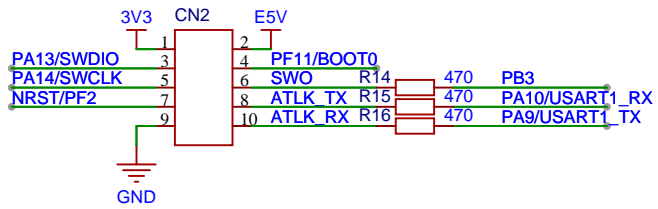
User key



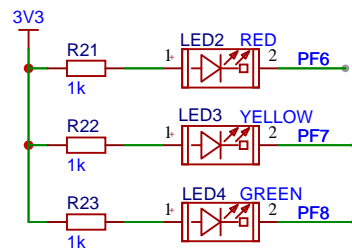
USART1 for ISP



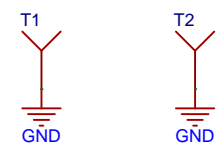
CAN_FD



AT-Link interface



LEDs



Test points

Project:	AT-START-M416	Ver:	1.1
Title:	Power & Peripherals	Page:	3
	Company:	Artery Technology	
	Date:	2024-12-31	Drawn:

